



Setting the pace
Castors for hospital and care beds



TENTE Medical

Castors For Hospital And Care Beds

TENTE is synonymous for innovative and high-quality designs in every aspect of castor development.

High quality standards during the development refined production techniques during the manufacturing stage, made us the market leader. Every TENTE castor is certified according to DIN/ISO 9001 manufactured and tested according to EN 12526 - EN 12533 standards.

One of TENTE's specialty areas are castors for the hospital and care market. This area has particularly high demands.

GALEA Series 5070 (Standard) • 5080 (Stainless)



GALEA
5070PJH100R05

GALEA
5077PJ H100R05

GALEA
5071PJ H100R05

Wheel Diameter (mm)	Tread Width (mm)	Stem Size (mm)	Stem Length (mm)	Overall Height (mm)	Load Capacity (kg)	Swivel Castor	Total Lock	Direct Lock
100	30	22/28	40	139	100	5070PJH100R05	5077	5071
125	30	22/28	40	162	100	5070PJH125R05	5077	5071

Remark: For other Stem Size, please refer to TENTE Catalogue 6.2 Page 91-113



Wheel: PIO
Wheel centre: Polypropylene,
Tread: solid rubber, grey,
non-marking, without
threadguards, plain bearing



Wheel: PJH
Wheel centre: Polypropylene,
Tread: TENTEprene
(thermoplastic rubber), with
threadguards, plain bearing



Wheel: YGH
electric conductive
Wheel centre: Polypropylene,
Tread: TENTEprene
(thermoplastic rubber),
with threadguards,
plain bearing



Colour options
These castors are also
available in other colours or
with a grey brake pedal.
For further assistance please
contact us.

BED Castor Twin Wheel Series 2940 • 2944 • 2946

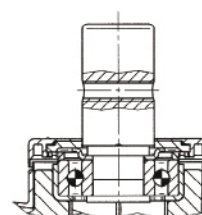


2940UA P150R05-32

2940USX125R05-32

2944USX125R26

2944UAP100R26



reddot design award
winner



Design Award Winner
German Designer Club

Wheel Diameter (mm)	Tread Width (mm)	Stem Size (mm)	Stem Length (mm)	Overall Height (mm)	Load Capacity (kg)	Swivel Castor	Central, Total or Directional Lock	Central Total Lock
100	15x2	28/32	45/50/96	129	125	2940UAP100R05	2044	2046
125	12x2	28/32	45/50/96	150	125	2940UAP125R05	2044	2046
150	15x2	28/32	45/50/96	175	150	2940UAP150R05	2044	2046

Remark: For other Stem Size, please refer to TENTE Catalogue 6.2 Page 204-205



Wheel: UAP
Wheel centre: Polyamide,
Tread: Polyurethane,
precision ball bearing



Wheel: USX
electric conductive,
non-marking
Wheel centre: Polyamide,
Tread: Polyurethane,
precision ball bearing,
sealed, washable



Notice
Accessories, dimensions
and technical specification
see pages 223-225. Different
cam profiles available on
request.



TUV Certified
The performance standard of
these castors even surpasses
the requirements of the
regulations set out in European
standard DIN EN 12531.

INTEGRAL BED CASTER Series 2040 (Standard) • 7040 (Stainless)



INTEGRAL 2040UA
X200R05-28



7040XSX150R05-28



7046UAX150R26-28S45 4xM8



INTEGRAL
2044UAP125R26-28S45 4xM8



INTEGRAL 2046XSX-
200R26-28S45 4xM8

Wheel Diameter (mm)	Tread Width (mm)	Stem Size (mm)	Stem Length (mm)	Overall Height (mm)	Load Capacity (kg)	Swivel Castor	Central, Total or Directional Lock	Central Total Lock
125	32	28/32	45/50/96	158	150	2040UAP100R05	2044	2046
150	32	28/32	45/50/96	183	150	2040UAP125R05	2044	2046
200	35	28/32	45/50/96	229	150	2040UAP150R05	2044	2046

Remark: For other Stem Size, please refer to TENTE Catalogue 6.2 Page 206-208



reddot design award winner



Award for Good Design International Forum Design



Wheel: UAP
Wheel centre: Polyamide,
Tread: Polyurethane,
precision ball bearing



Wheel: UAX
Wheel centre: Polyamide,
Tread: Polyurethane,
precision ball bearing,
sealed, washable



Wheel: XSX
electric conductive,
non-marking
Wheel centre: Polyamide,
Tread: Polyurethane,
precision ball bearing,
sealed, washable



TUV Certified
The performance standard of these castors even surpasses the requirements of the regulations set out in European standard DIN EN 12531.

Care Bed Caster Series 2470



2470PJO075P40



2470PJ P100P30-13



2470PIP125R05-22 TFR



2474PIP100R26-28S45 4xM8



2476PJO150R36-32S30 4xM6

Wheel Diameter (mm)	Tread Width (mm)	Stem Size (mm)	Stem Length (mm)	Overall Height (mm)	Load Capacity (kg)	Swivel Castor	Central, Total or Directional Lock	Central Total Lock
100	32	28/32	45/50/96	138	100	2470PJP100R05	2474	2476
125	32	28/32	45/50/96	163	100	2470PJP125R05	2474	2476
150	32	28/32	45/50/96	188	100	2470PJP150R05	2474	2476

Remark: For other Stem Size, please refer to TENTE Catalogue 6.2 Page 216-217



Wheel: PJP
Wheel centre: Polypropylene,
Tread: TENTEprene (thermoplastic rubber), with threadguards, precision ball bearing



Wheel: PIP
Wheel centre: Polypropylene,
Tread: solid rubber, grey, non-marking, with threadguards, precision ball bearing



Wheel: XSX
electric conductive,
non-marking
Wheel centre: Polyamide,
Tread: Polyurethane, with threadguards, precision ball bearing, sealed



Pressed steel wheels
Series 2470 is also with pressed steel wheels DIK and DYK available.

LEVINA Design Castor Series 5320 • 5370(Standard) • 5380 (Stainless)

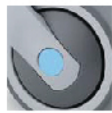


5320 PJO 075 5325 PJO 075 5325 PJO 075 with grey pedal – optional (RAL 7001) 5320 PJP 075 5325 PJP 075 5325 PJP 075 with grey pedal – optional (RAL 7001)

Fittings:



Plate Solid stem Bolt hole



Washable versions feature a blue clip.



Electric conductive versions feature a yellow clip.

- 5320 / 5370 / 5380 Swivel Castor
- 5325 Swivel Castor with wheel brake
- 5371 / 5381 Swivel Castor with directional lock
- 5377 / 5387 Swivel Castor with total lock



Design Award Winner
German Designer Club



Wheel Diameter (mm)



Tread Width (mm)



Stem Size (mm)



Stem Length (mm)



Overall Height (mm)



Load Capacity (kg)

Swivel Castor

Total Lock

Directional Lock

Wheel Diameter (mm)	Tread Width (mm)	Stem Size (mm)	Stem Length (mm)	Overall Height (mm)	Load Capacity (kg)	Swivel Castor	Total Lock	Directional Lock
075	25	60x60	48/38x48/38	103	75	5320PJP075L51	5325	
100	32	77x87	61.5/56x51.5/46.5	137	100	5370PJP100L50	5377	5371
125	32	77x87	61.5/56x51.5/46.5	161	100	5370PJP125L50	5377	5371
150	32	77x87	61.5/56x51.5/46.5	190	100	5370PJP150L50	5377	5371

Remark: For other Stem Size, please refer to TENTE Catalogue 6.2 Page 74-89



Wheel: PJP
Wheel centre: Polypropylene, Tread: TENTEprene (thermoplastic rubber), with integrated threadguards, precision ball bearing



Colour options
All versions in grey- white RAL 9002 and graphite-black RAL 9011 available.



Grey brake pedal
These castors are also with grey locking lever available



LEVINA XL
In wheel diameter 125 mm these castors are also available with extended fork for a better access to the brake pedal.



LINEA E-lock Series 594E

594E Swivel castor central-, total- or directional lock with a fully integrated motorized lock. LINEA e-lock Series 594E is an additional version of the successful edition of the proven hospital bed castor series LINEA. What makes this castor unique is its fully integrated, motor-controlled locking system. I.e. the LINEA 594E is not locked by a foot-operated switch, but electrically.

Advantages

- Directional lock can be activated always from the service side
- Opens up new possibilities regarding the design of new beds, by elimination of the steel bars and foot pedals
- No safety distances between the castor and the bed frame due to lever
- Programmable logic controller • Switching torques and switching forces
- Extremely low level of mechanical wear • Noised reduced

Available as: **LINEA e-lock594E**

Swivel castor central-, total- or directional lock with a fully integrated motorized lock.

Wheel Material:

USP - electric conductive, non-marking

Wheel Centre: Polyamide

Tread: Polyurethane

Precision ball bearing

USC: Additional washable (as option)

Wheel Size: 150mm

Load capacity: 150kg per castor

Housing:

Made of high-grade synthetic materials. Two precision ball bearings in the swivel head.

Power supply:

24 V/DC supply voltage 1,6 A max motor stream



Emergency release In the event of a power cut, the castor can be manually unlocked. The emergency release will be automatically reset during the motor's reference run as soon as power is available again.

LINEA Twin Wheel Castor Series 5920 • Series 5940



LINEA 5946UAC125R36-32S30
CC R9002



LINEA 5940XSC125R05-22
RAL9002



LINEA 5940UAC125P30-13
RAL9002



LINEA 5940UA P150P52



Fittings:



Bolt hole



Plate



Solid stem

- 5920/5940 Swivel Castor • LINEA light, Series 5920
- 5940 LH (Low Height) • LINEA combined, Series 594
- 5925/5945 Swivel Castor with wheel brake
- 5941 Swivel Castor with directional lock
- 5947 Swivel Castor with total lock
- 594C Swivel Castor with combined brake pedal
- 592D Swivel Castor with integrated Dead Man Break



Design Award Winner
German Designer Club



Award for Good Design
International Forum Design



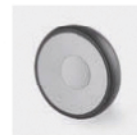
Wheel: UAP
Wheel centre: Polyamide,
Tread: Polyurethane,
precision ball bearing



Wheel: XSP
electric conductive,
non-marking
Wheel centre: Polyamide,
Tread: Polyurethane,
precision ball bearing



Wheel: UAI UAO
Wheel centre: Polyamide,
Tread: Polyurethane, plain
bearing



Wheel: XSI XSO electric
conductive, non-marking
Wheel centre: Polyamide,
Tread: Polyurethane, plain
bearing

Specialty Castor | AVG Castor Series 814W

Swivel castor with automatic directional stability 180° or 360° and wheel brake

The castor's slimline design makes it outstanding for use in all automatic guided vehicles. If the castor loses contact with the floor, it automatically realigns itself with the direction of travel - thanks to its internal spring. This spring also stops the castor from swivelling uncontrollably, making it easy to negotiate doors, lifts and narrow corridors.

With its solid stainless steel components and insulated bearings, the castor is washable and protected from spray water and detergents. By working on the principle of a ballpoint pen, the castor brake is easy to lock and unlock.



Also available:

Series 814S
Swivel castor with automatic directional stability 180° or 360°

Series 814S with Directional lock
Swivel castor with automatic directional stability 180° or 360°

Series 8148 Fixed castor

A moving solution

E-drive Driving System

The core of this drive system is a DC gear motor that transmits its power to the drive wheel.

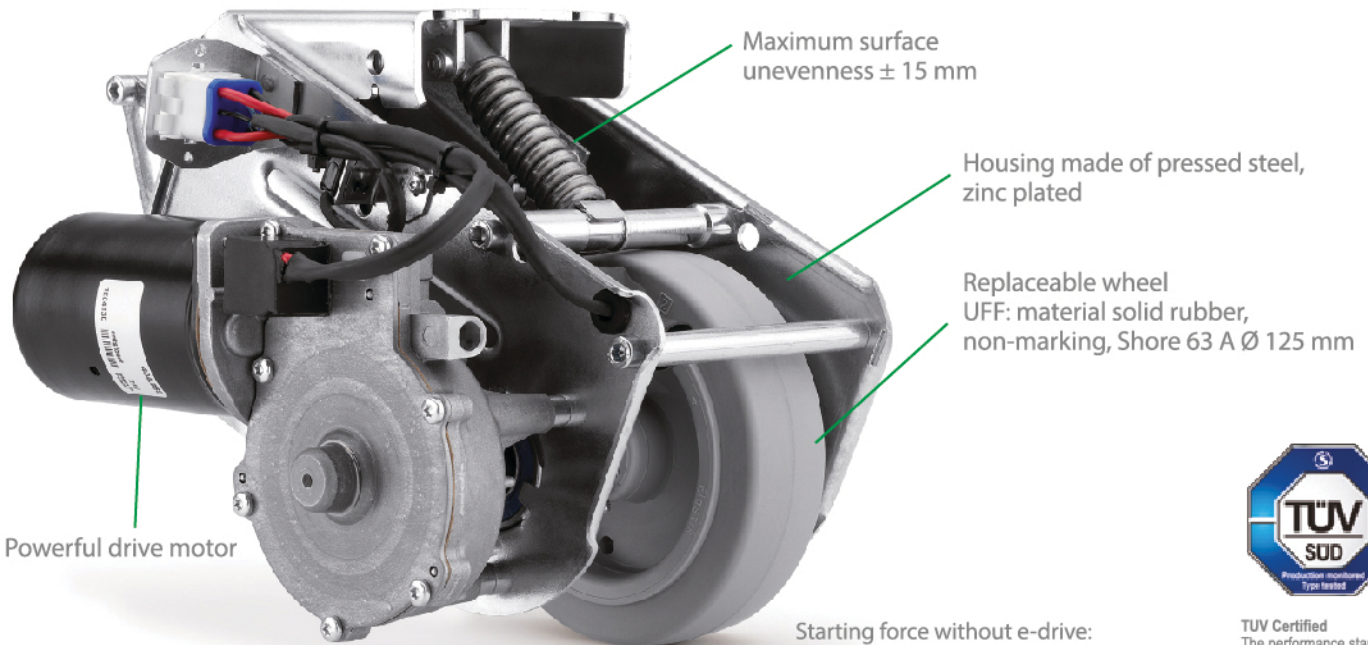
The TENTE e-drive 1 system assists the user to move beds with heavy loads in an easier way. The starting and moving in forward and backward direction as well as the stopping is clearly facilitated. In addition to the easier handling, time can be saved and days of user sickness caused by the high stress can be minimised.

TECHNICAL DATAS

Installation height:	170 mm
Length:	max. 315 mm (emergency release actuated)
Width:	190 mm
Height (retracted):	140 mm
Maximum surface unevenness:	± 15 mm
Lifting force / downforce:	400 N
Weight:	6 kg
Protection grade:	IP X4



Get heavy loads moving effortlessly with this efficient starting assistance



Powerful drive motor

Maximum surface unevenness ± 15 mm

Housing made of pressed steel, zinc plated

Replaceable wheel
UFF: material solid rubber, non-marking, Shore 63 A Ø 125 mm

Starting force without e-drive:
Starting force of 40kg for equipment
with a total weight of 400kg



TUV Certified
The performance standard of these castors even surpasses the requirements of the regulations set out in European standard DIN EN 12531.

APPLICATION EXAMPLES FOR E-DRIVE

Intralogistic

- Picking trolleys
- Parcel trolleys
- Special transport trolleys for e.g. carbody parts, tools, components

Hotel

- Hotel service trolleys
- Laundry trolleys
- Luggage trolleys

Catering

- Food distribution trolleys
- Induction trolleys

Hospital

- Food distribution trolleys
- Induction trolleys
- Surgery tables

